



Brimbank
City Council

Brimbank Lifelong Learning Strategy 2018-2023

Building Baseline Measures

A framework for building better learning outcomes for all





Introduction

Brimbank City Council has a vision for lifelong learning:

‘To foster a community of lifelong learners in Brimbank by empowering people to take control of their lives, build aspirations, enhance employability and quality of life and achieve this by working alongside partner organisations and the community.’

Brimbank Lifelong Learning Strategy 2018-2023

The Strategy supports learning in all life stages and is a long-term approach for Council and its partners to improve the social and economic outcomes of individuals and the community.

This booklet outlines the baseline measures Brimbank City Council will use to monitor the Strategy’s progress.

Why are we developing baselines for the Strategy?

There have been significant improvements in learning participation and outcomes in Brimbank, including:

- increased levels of completion for Bachelor or Higher degrees, advanced diploma and diploma, and vocational education;
- decreased percentage of population with no qualification; and
- 60% of the Brimbank community speaking a language other than English, which is one of the new competencies for jobs of the future.

Developing baseline measures will support:

- Council and its partners in the monitoring of any specific priorities and trends to inform a framework for future work; and
- Council to understand whether or not there has been a positive shift in intended outcomes or measures identified in the Strategy.

Early Years

Birth to compulsory school age



Babies and preschool children are supported to have learning-rich environments at home and in the community

Supporting the community

Support parents and carers in their roles in children's lives, and advocate for more early learning resources and affordable pre-school opportunities. We will promote literacy, numeracy and the value of home languages.

Vulnerable children

A special focus on the transition to school for developmentally vulnerable children of our community.

Intended outcomes

More children and families benefit from services which support transition to school.

These may include, attendance at:

- Supported Playgroups
- Libraries Story times
- First time parent groups
- Parent engagement programs
- Intergenerational exchange and learning opportunities

More children are participating in four year old kindergarten



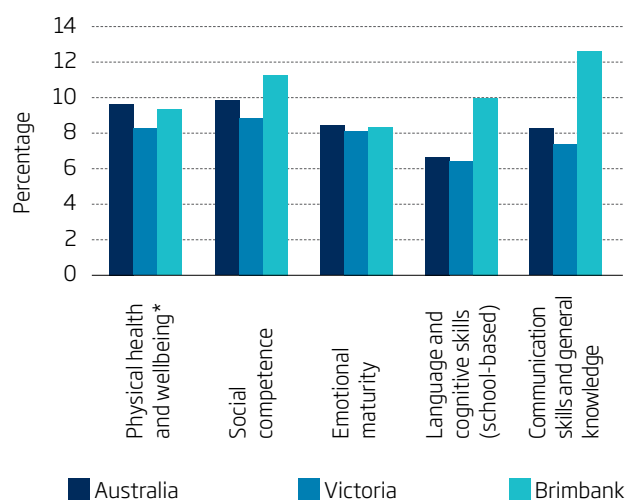
2019

83.7%

2023

Continued focus on the value and use of bilingualism across the community and learning

Improved outcomes for children on the percentage of children developmentally vulnerable on two or more domains before entering school



* Results for children with chronic special needs are not included in the results. If there are a certain number of questions not answered by teachers, these children do not contribute to the domain analysis.



The case story:

1 BCC Pre-School Engagement Strategy

The main objective of the Pre-school Engagement Strategy is that families and children, particularly vulnerable children, get support to easily access pre-school. The main vision of the Strategy, is all children benefit from the advantages pre-school provides, including social skills, better school performance, fewer behavioural issues and engagement in lifelong- learning.

The Strategy, which received a Local Government Pro Excellence Award, includes:

- an Early Years' Service Navigator supporting access of children to pre-school;
- reserved pre-school spaces for vulnerable and newly arrived families and children;
- a centralised pre-school registration portal for parents to register their child for funded kindergarten; and
- a Maternal/Child Health (MCH) pre-school link activated at the 2 week key Age/Stage visit, if the parent wishes to register their child for pre-school.

Key outcomes include and not limited to, increased enrolments to Early Start pre-school places for three year olds with high needs and a significant increase in the uptake of the central registration portal, with 185 parents using the portal in 2016 to 2,404 in 2019.

2 Family Mentoring for newly arrived migrant families - Victorian Cooperative on Children's Services for Ethnic Groups (VICSEG)

VICSEG's Family Mentoring for newly arrived migrant families combines a peer-to-peer family mentoring and Agency Education approach, that aims to assist vulnerable, newly arrived migrant and refugee families from culturally and linguistically diverse backgrounds to understand and access the Australian early childhood services and primary school education.

VICSEG's Family Mentors are chosen for their cultural understanding, community connections, ability to support and mentor families with young children and ability to work collaboratively with service providers.

This program is an example of a Brimbank based initiative that strives to support parents and carers in their children's lives.

Outcomes for the children involved in the program included:

- Improved social skills such as how to play with other children; and
- The development of skills necessary to transition to kindergarten.



School Years

6 - 16 years old



School aged children and teenagers in Brimbank will have access to a broad range of engaging learning opportunities

Supporting the community

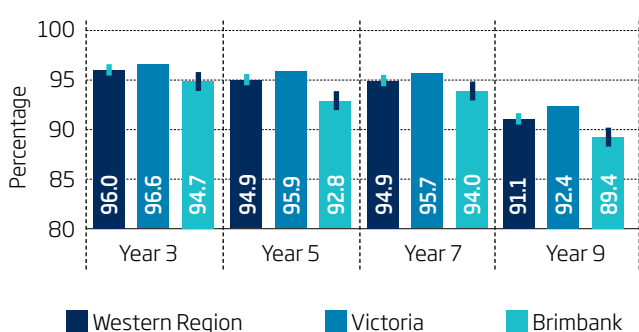
Enable and encourage additional learning support and innovative educational opportunities by actively supporting and developing community linkages with schools. Advocate for more investment in Brimbank's public school system and develop best transition models with schools, families and community.

Vulnerable children & teenagers

A special focus on students who are at risk of disengaging or have disengaged from school. Advocate for more resources and increased supports for vulnerable members of our community.

Intended outcomes

% at or above the National minimum standard for literacy 2019



Increased percentage of Year 9 students meeting national standards for literacy

2016

88%

2023



More children are regularly attending school ¹



2019

82%

2023



¹ School attendance rate reported by all schools from year 1 to year 12

Increased opportunities to participate in inclusive or targeted out of school programs for children with disabilities



2019

45

Programs for people with disabilities

2023



Increased opportunities to participate in out of school learning



2019

310

Homeworks & learning clubs

138

Aspirational & vocational programs

2023





The case story:

1 Dynamic Young Citizens of Brimbank (DYC)

The Dynamic Young Citizens (DYC) of Brimbank project was designed to provide children aged 9 – 12 years an opportunity to participate in the local community, increase social connectedness, sense of pride and have meaningful input into local decisions that affect them.

The program objectives were:

- to create a strong child-friendly community that understands the importance of children, and uses this knowledge to prioritise the health, wellbeing and early development of young children at the local level;
- to develop best practice in child participation within Council and the Community; and
- enable Brimbank children to have a stronger influence regarding issues which affect them.

Commencing in February 2017, the DYC has worked with ten public schools and approximately 250 students.

This work has seen the development of strong partnerships between local primary schools and Council. For example, local primary schools who participated in the Save Stony Creek campaign were past participants of the DYC program.

2 Young Researchers Program

The Brimbank Young Researchers program, a partnership between Brimbank Youth Services and Swinburne University, was a year-long program that aimed to empower secondary school students with competencies such as qualitative research skills.

This project is an example of successful community linkages with schools and supporting school curriculum requirements.

The pilot program was held in 2018, and resulted in four high-level research reports, reflecting student concerns and challenges within their school and community contexts.

The areas of research included:

- why VCE and the Victorian education system are not adaptable for all students;
- the perception of harmony within the school community;
- the perceived importance of youth voice amongst the school community; and
- the impact of bullying on students and teachers.

The schools involved in the training included; Catholic Regional College, St Albans, Copperfield College, Sydenham & Kings Park, St Albans Secondary College, Victoria University Secondary College and Sunshine College – Senior Campus.



Young People

Post-compulsory school age, 17 to early adulthood



Young people have positive post-school education, employment and learning opportunities

Supporting the community

Support a range of learning, training and educational opportunities for young people. We will promote job readiness and career pathways to ensure young people have the best possible opportunity for employment.

Encourage opportunities for active citizenship and provide support to parents and carers in their roles in young people's lives.

Vulnerable young people

A special focus on young people with priority needs and those facing barriers in accessing learning.

Advocate for better supports for young people who have disengaged from education & training or who are navigating options post high school.

Intended outcomes

2016

2,910

young people residing in Brimbank are experiencing unemployment

2023

Unemployment among young people residing in Brimbank decreased



It has been identified, acknowledged and recognised that meaningful employment is a key determinant of health and wellbeing, offering a critical pathway out of disadvantage for young people in Brimbank¹



¹ School Brimbank Youth Jobs strategy literature review (2018)

Increased participation of young people attending formal education

2016

1,800 TAFE

7,032 University



2023



More young people engaged in employment or study



2016

23,035 young people

2023



Young people leaving school before completing Year 12, in either an apprenticeship or traineeship



2018

30%

2023



An increased number of learning and pathway opportunities co-designed by young people





The case story:

1 Online Homework Club

To support the learning needs of young people an online homework club was developed in partnerships between Brimbank Learning Futures, Neighbourhood Houses and Equal Ed.

An extension of the Sydenham Neighbourhood House homework club, this program provided an extensive wide reaching outreach component to forge positive learning relationships between young people and tutors. The Homework Club transitioned to an online space to adapt to the changing needs of young peoples' schooling.

An extensive outreach component supported engagement with a wide reach of young people forging positive learning relationships with tutors.

As a result of the program, the reported short-term outcomes included:

- greater confidence for young people in their studies;
- increased learning relationships with tutors and feeling supported to navigate difficult subjects in order to understand concepts; and
- better learning outcomes as a result of extensive follow up and outreach with families and students to ascertain progress.

2 Bold Source project

Facilitated by youth workers, the Bold Source is a youth-led editorial committee of young people between the ages of 12-25. The editorial team publishes a biannual magazine which acts as a platform to share young people's stories.

Young artists and writers living in the West were invited to submit work. The editorial committee of young people have creative ownership of the platform which showcases the artistic endeavours and stories of young people. Social media platforms provided enhanced communication across the group with the decision making lead by young people.

Outcomes included:

- giving a voice to young people in the West;
- showcasing the creative talents of young people; and
- building skills and increased editorial writing skills



Adults

25 - 60 years old



Adults participate in lifelong learning for quality of life, employment and citizenship

Supporting the community

Advocate for improved provision of diverse and affordable adult learning opportunities, both formal and informal, co-developed by learners.

Actively support the achievement of functional English language and literacy skills for all adults as well as maintaining home languages.

Vulnerable adults

A special focus on disadvantaged adults who are at risk of disengaging or have disengaged from training and employment.

Advocate for more resources and increased supports for vulnerable members of our community.

Intended outcomes

Improve proficiency in English through additional language support opportunities and strengthened school and community partnerships



Increased wrap around support to keep students engaged.

Strengthened connections and partnerships with other agencies and relevant service providers.

An increased number of learning opportunities co-designed by adult learners



Increased number of adults with formal Improvement in the highest level of schooling qualifications



	2016	2023
Bachelor or higher degree	16%	↑
Advanced diploma or diploma	8%	↑
Vocational	15%	↑
No qualification	51%	↓

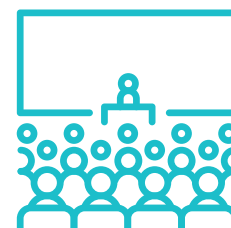
Improvement in the highest level of schooling



People in Brimbank who completed Year 12 schooling (or equivalent)



We have a number of Formal Learning Providers in Brimbank



1

University

13

TAFE's and RTO's

10

Learn Local's



The case story:

1 Women's Shed Program

The Women's Shed Program assisted eight women to learn the skills to confidently use power tools and benchtop machinery to complete Do It Yourself (DIY) projects and basic home maintenance.

Eight participants attended the program ranging from 44-60 years of age and of cultural backgrounds including, Maltese, Italian, Chinese and Australian.

This program is an example of a Brimbank City Council initiative that supports and leverages intergenerational learning opportunities.

Two participants who commenced with limited skills and knowledge have increased their capacity to a level which has enabled them to become volunteer shed champions. Their aspiration is to run an independent women's only shed program at Westvale Community Centre.

2 Scholarship support for adult learners

Scholarship support aims to aid adult learners to apply for scholarship opportunities and assist them with the financial support needed to study in the TAFE or University sector.

The Brimbank Learning Futures initiative supported adult learners to prepare their scholarship applications to enable them a better chance of a successful outcome.

This service is an example of breaking down barriers to improve access and equity to those who are at risk of disengaging, and/or require the support and/or resources to access learning opportunities.

Julian's story (Scholarship support participant)

Julian is an adult learner who was enrolled in a barber course requiring a costly haircutting kit which was essential to help him practice cutting hair in each of his classes.

The \$500 financial support he received, along with support applying for a scholarship assisted Julian in purchasing much needed learning equipment to support his successful participation in the course.



Later Life

60 years and beyond



The community builds on the experience and wisdom of older adults, supports intergenerational innovation & lifelong learning as part of healthy ageing

Supporting the community

Encourage the creation of a range of accessible, formal and informal learning options for older citizens as well as building and leveraging intergenerational learning opportunities.

Advocate for more informal learning opportunities for seniors.

Vulnerable adults

A special focus on older citizens facing social isolation.

Advocate for more resources and increased active engagement in community life.

Intended outcomes

Our seniors benefit from our three guiding strategic principles

Engagement

Communication

Access



Increased engagement in seniors

The total membership of seniors in groups operating across Brimbank

2019

9,275

2023



Our seniors volunteer in the community

Percentage of seniors participating in volunteering activities

2016

8%

2023



We support seniors to engage in work or learning with an increased focus on online learning

Total percentage of fully engaged seniors in work or learning (55 years+)

2016

16.5%

2023



Based on our strategic priorities, our seniors have increased access to:



Later learning options

- University of the 3rd Age
- Brimbank Libraries Social Support

Intergenerational learning opportunities

- We Are Brimbank Awards
- Learner to Driver Program (L2P)

Ease of active engagement in the community

- Discover Learning In Brimbank
- Neighbourhood Centres Social Support



The case story:

1 Professional development session for local tutors

Brimbank Learning Futures hosted a professional development workshop for tutors from the Brimbank Neighbourhood Houses and The University of the 3rd Age (U3A).

25 volunteer tutors attended the session and provided very positive feedback upon completion; tutors expressed appreciation for the rare opportunity to network with others and share learning.

The workshop was a great opportunity for tutors to network with one another, ask questions and improve their professional practice for teaching older learners in a safe and supportive environment.

This professional development session was co-designed with the tutors and key stakeholders from the Learning Unit's Later Years Communities of Practice group, to provide greater access and range for later life learning in Brimbank. This initiative supports the special focus for the later years life stage, striving to create accessible formal and informal learning opportunities.

2 Lifelong and intergenerational learning options

The University of the 3rd Age (U3A) offers opportunities for the residents of Brimbank. The U3A is a 100% volunteer organisation comprising of retired and semi-retired 50 years and over people, involved with more than 40 classes/activities tutored by local people. Volunteers share many educational, creative and leisure activities.

This is an example of how Brimbank is encouraging social participation for seniors through the Brimbank Age Friendly City Plan*, which focuses on enabling opportunities for inter-generational learning as well as a range of formal and informal learning options. Other achievements to date include establishing a volunteer group of 167 people over 60, enrolling three older people in the Brimbank Community Leadership Program and running the Brimbank Seniors Festivals for more than 1,200 participants.

Additionally, there are many examples of U3A members who have gained skills and confidence throughout their time, who have progressed to volunteers.

Maria was a long standing U3A Brimbank ballroom dancing student who developed an interest in Zumba dancing. She was supported to start up a class. That class now has 40 eager participants.

* <https://www.brimbank.vic.gov.au/plans-policies-and-strategies/plans/age-friendly-city-plan-2013-2017>



References

Early Bird Catches the Worm: The Causal Impact of Pre-school Participation and Teacher Qualifications on Year 3 NAPLAN Outcomes. (2013). [online.] Department of Education and Training Victoria.

<https://www.education.vic.gov.au/Documents/about/research/preschoolparticipationandqualisummarypaper2013.pdf> [Accessed 3 Sep. 2019].

Fundamental Principles for Youth Employment. (2016.) [online] Social Ventures Victoria.

Available at: <https://www.socialventures.com.au/assets/Fundamental-principles-for-youth-employment-report.pdf> [Accessed 3 Sep. 2019]

The Brimbank Atlas of Health and Education: Not Published, 2nd Edition. (September 2019). Produced for the Brimbank Collaboration: Victoria University and Brimbank City Council.

Brimbank Age Friendly City Plan

<https://www.brimbank.vic.gov.au/plans-policies-and-strategies/plans/age-friendly-city-plan-2018-2022>

Brimbank Children's Strategy 2020-2024

<https://www.brimbank.vic.gov.au/plans-policies-and-strategies/plans/brimbank-childrens-plan>

University of the 3rd Age

www.u3abrimbank.org.au

Brimbank Neighbourhood Houses

www.brimbank.vic.gov.au/community/neighbourhood-houses-and-community-centres

Brimbank Youth Services

www.brimbankyouth.com

VICSEG New Futures

www.vicsegnewfutures.org.au

Brimbank Libraries

www.brimbanklibraries.vic.gov.au

Department of Education and Training

www.education.vic.gov.au



Brimbank City Council

Telephone 9249 4000

Email info@brimbank.vic.gov.au

Post PO Box 70, Sunshine, VIC 3020

Hearing or speech impaired?

- TTY dial 133 677
- Speak & Listen 1300 555 727
- www.relayservice.gov.au, then enter 03 9249 4000



Find us on Facebook, Twitter and YouTube

 www.facebook.com/brimbankcouncil

 www.twitter.com/brimbankcouncil

 www.youtube.com/brimbankcitycouncil



131 450

Local call costs apply



Use Brimby, the online virtual assistant
brimbank.vic.gov.au

www.brimbank.vic.gov.au