

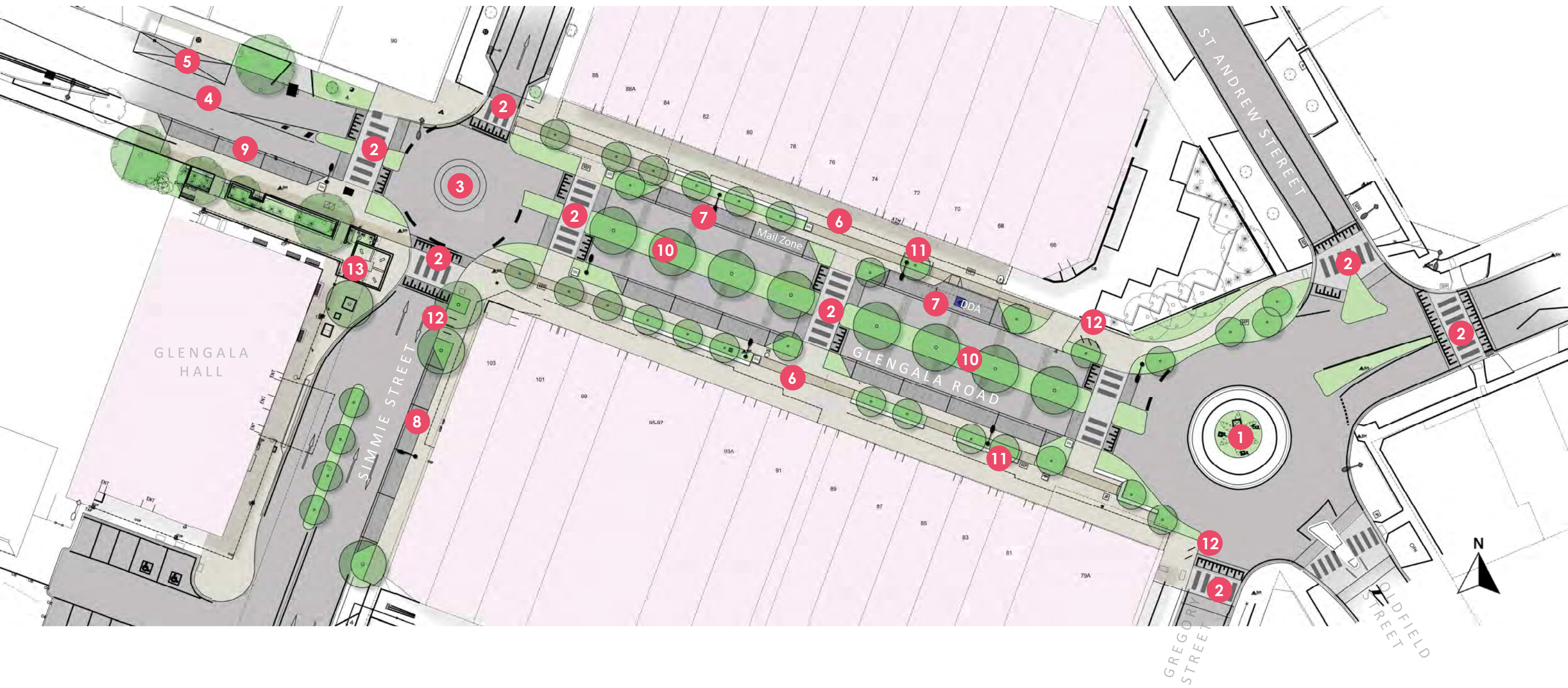
Proposed Concept - OPTION 1

Building on the Plan Melbourne Pilot Project recommendations and further investigative works, a concept design for Glengala Village public realm has been developed.

The design aims to support Glengala Village as a vibrant neighbourhood hub and an attractive local destination. It is a sustainable, cool and healthy centre for everyone.

Legend

- 1 Retention and rationalisation of eastern roundabout
- 2 Introduction of wombat crossings
- 3 Introduction of new roundabout at Simmie Street intersection
- 4 Removal of existing push button pedestrian crossing
- 5 Relocation of bus stop to west of Simmie Street and provide shelter (subject to stakeholder approvals)
- 6 Widened Village footpaths: approximately 6m to north (3m gain), 6.3m to south (2m gain) with added greenery and ample seating and gathering opportunities. Inclusion of public art will be considered.
- 7 Rearrangement of northern parking from angled to parallel
- 8 4x new indented parking bays on Simmie Street
- 9 3x new indented parking bays on Glengala Road west of Simmie Street
- 10 3m wide planted central median and large canopy avenue tree planting
- 11 Update to street lighting (subject to lighting assessment)
- 12 Bicycle facilities including hoops. Consider a water station.
- 13 Consider opportunity to open up the corner for community meeting space

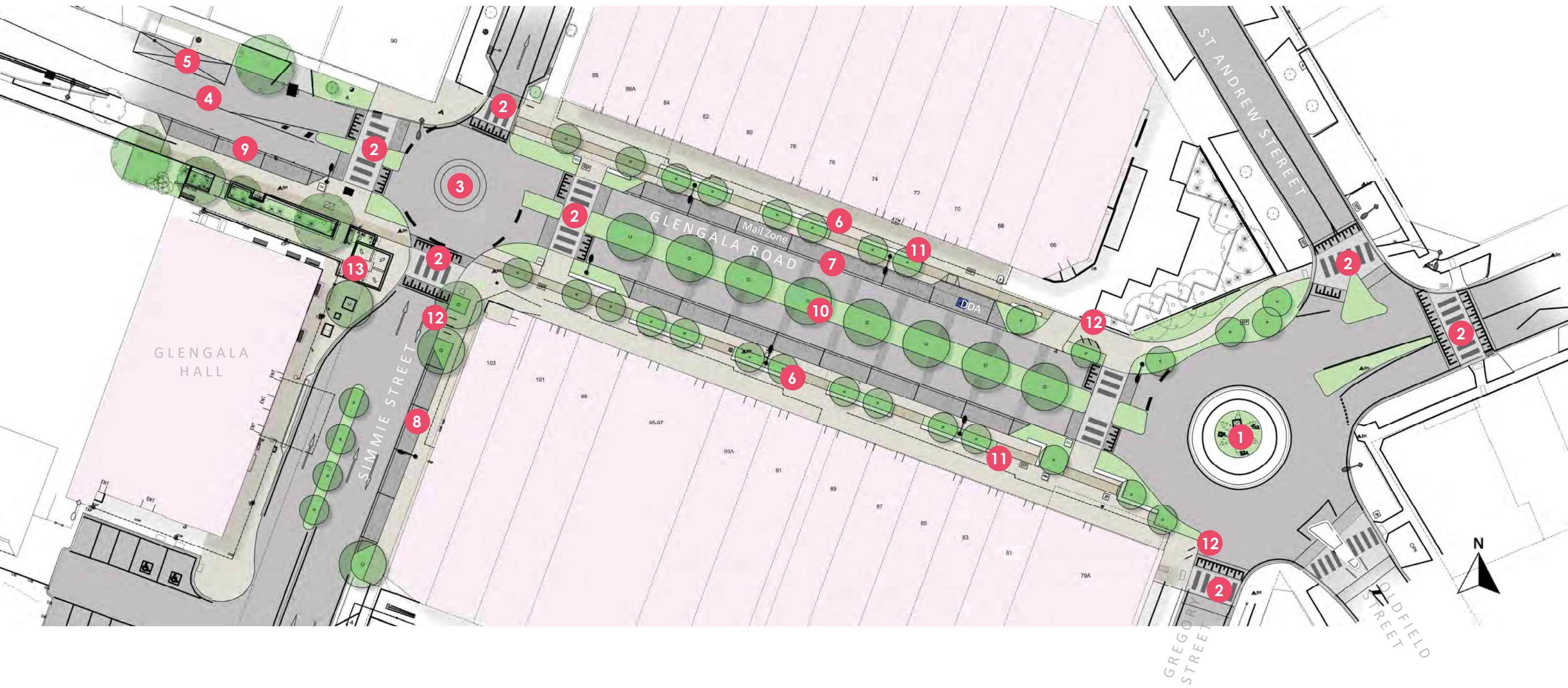


Proposed Concept - OPTION 2

Option2 removes a pedestrian crossing point in the middle of the Village in favour of maximised on-street parking provision.

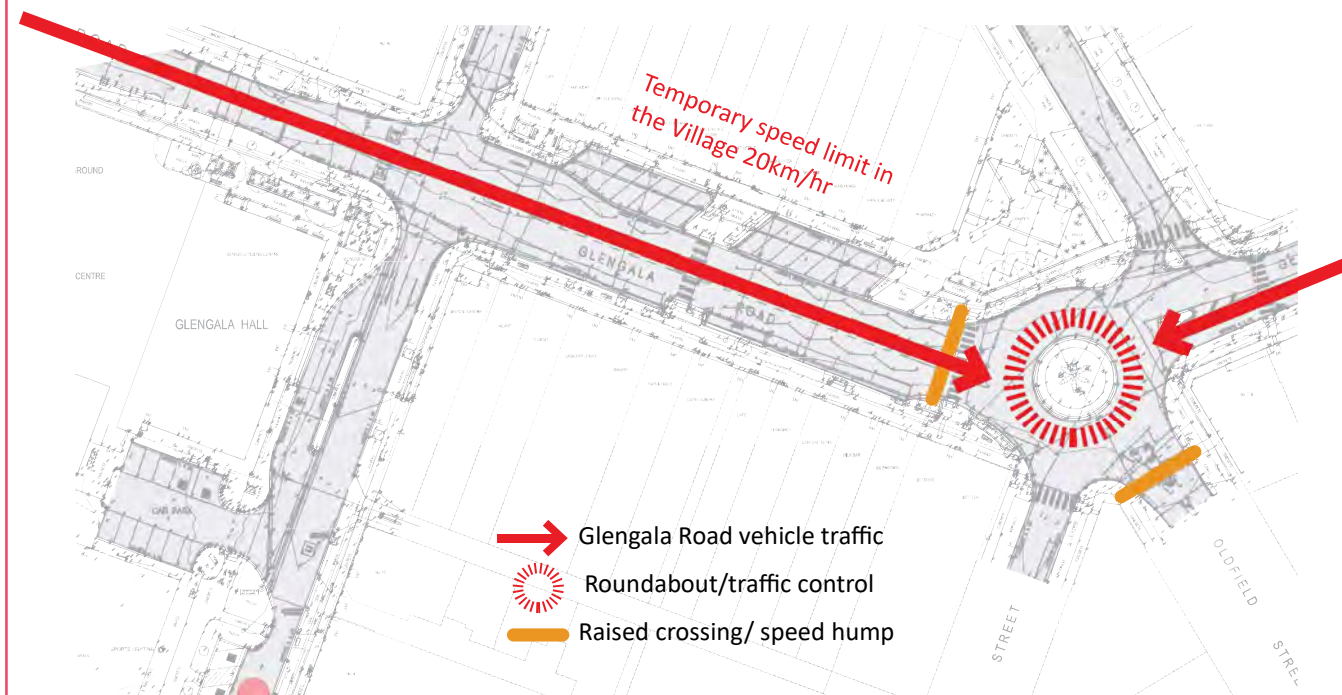
Legend

- 1 Retention and rationalisation of eastern roundabout
- 2 Introduction of wombat crossings
- 3 Introduction of new roundabout at Simmie Street intersection
- 4 Removal of existing push button pedestrian crossing
- 5 Relocation of bus stop to west of Simmie Street and provide shelter (subject to stakeholder approvals)
- 6 Widened Village footpaths: approximately 6m to north (3m gain), 6.3m to south (2m gain) with added greenery and ample seating and gathering opportunities. Inclusion of public art will be considered.
- 7 Rearrangement of northern parking from angled to parallel
- 8 4x new indented parking bays on Simmie Street
- 9 3x new indented parking bays on Glengala Road west of Simmie Street
- 10 3m wide planted central median and large canopy avenue tree planting
- 11 Update to street lighting (subject to lighting assessment)
- 12 Bicycle facilities including hoops. Consider a water station.
- 13 Consider opportunity to open up the corner for community meeting space

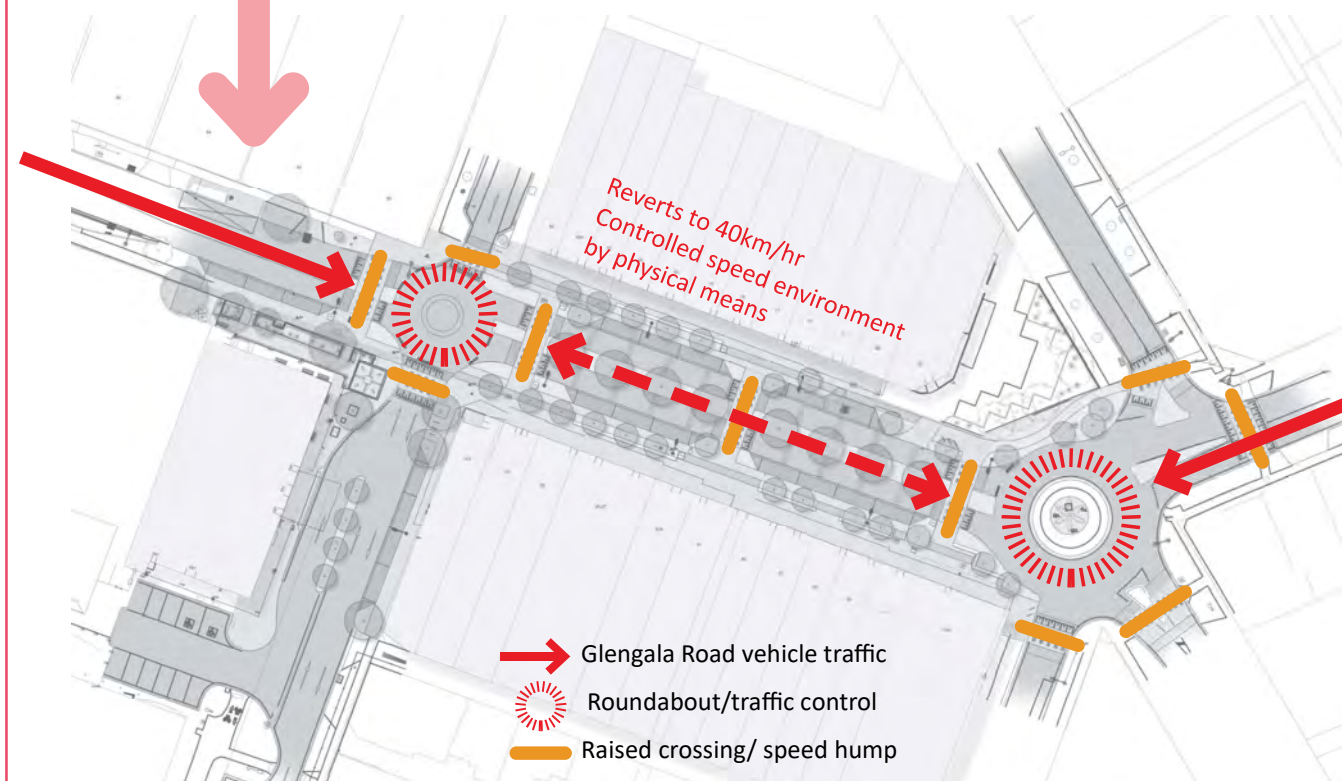


Proposed Concept

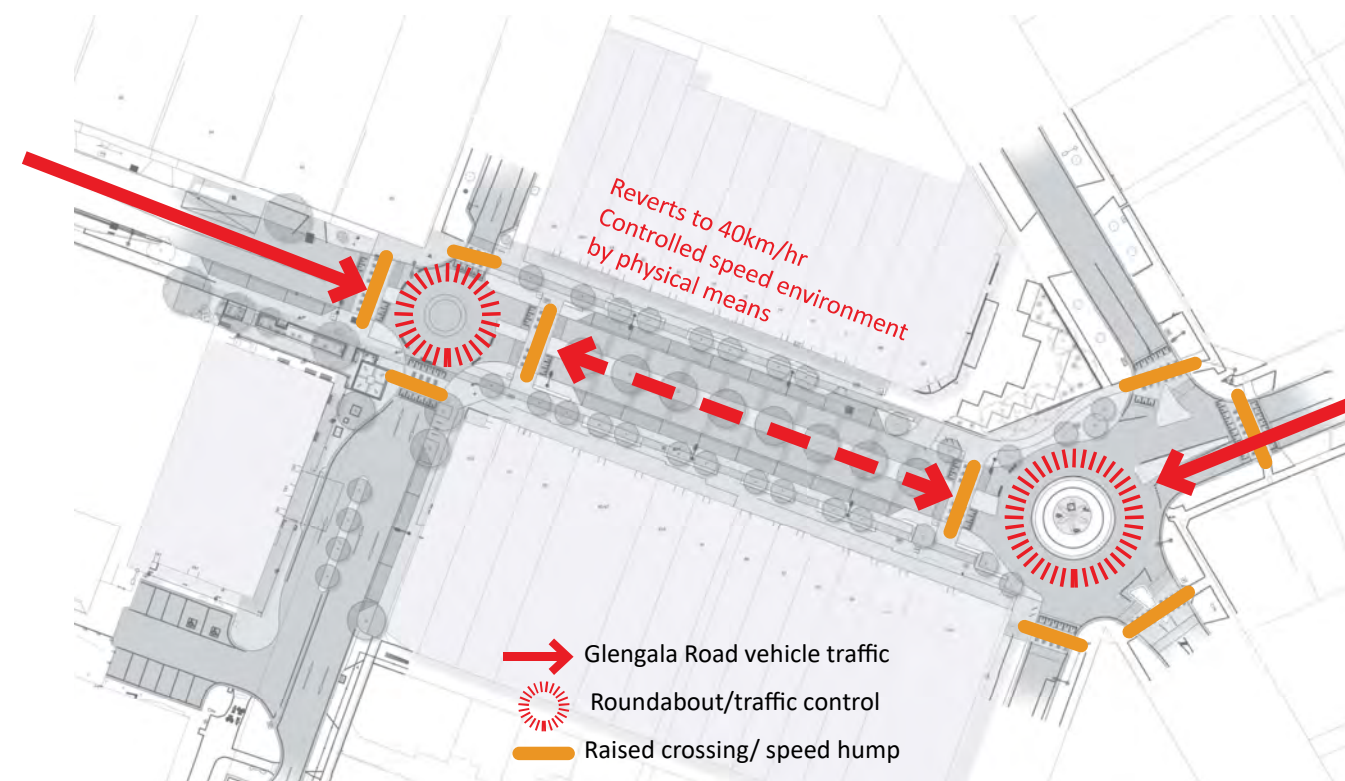
Traffic Calming



Existing



Proposed Option1



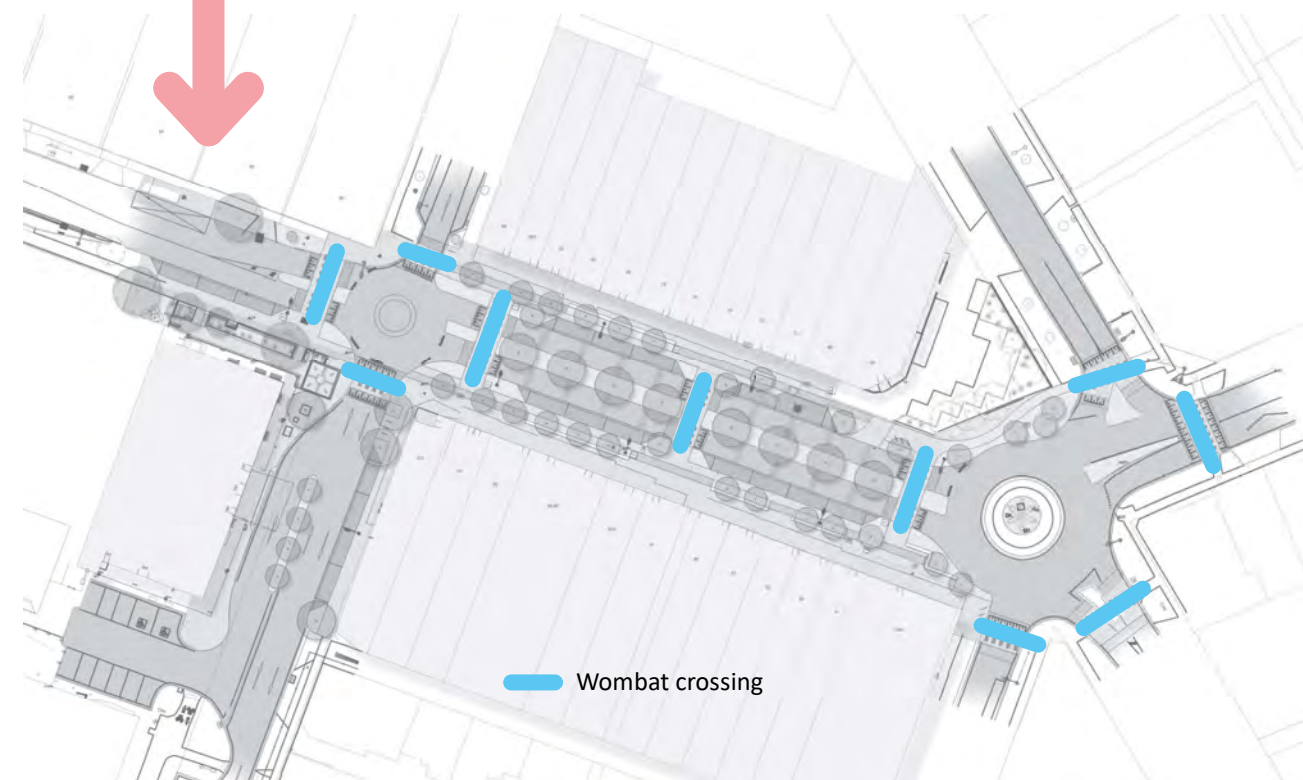
Proposed Option2

Proposed Concept

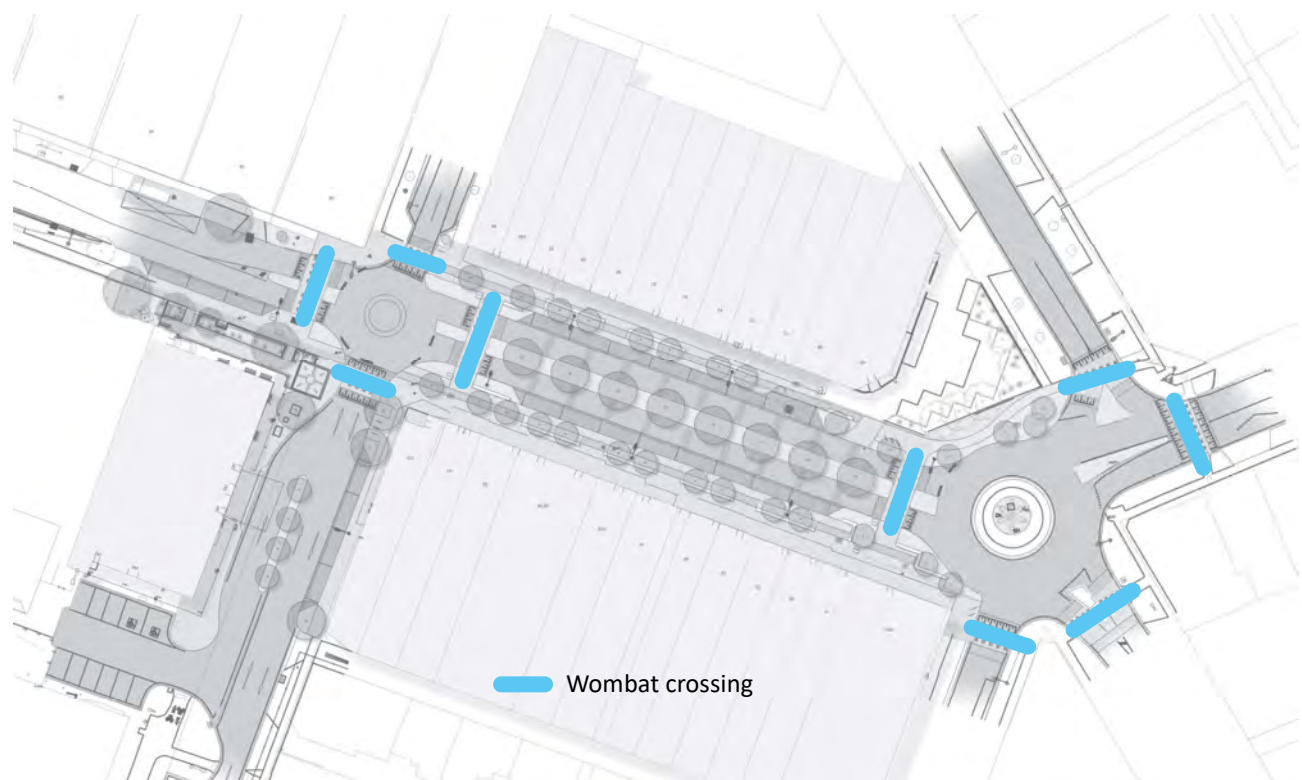
Pedestrian Connectivity



Existing



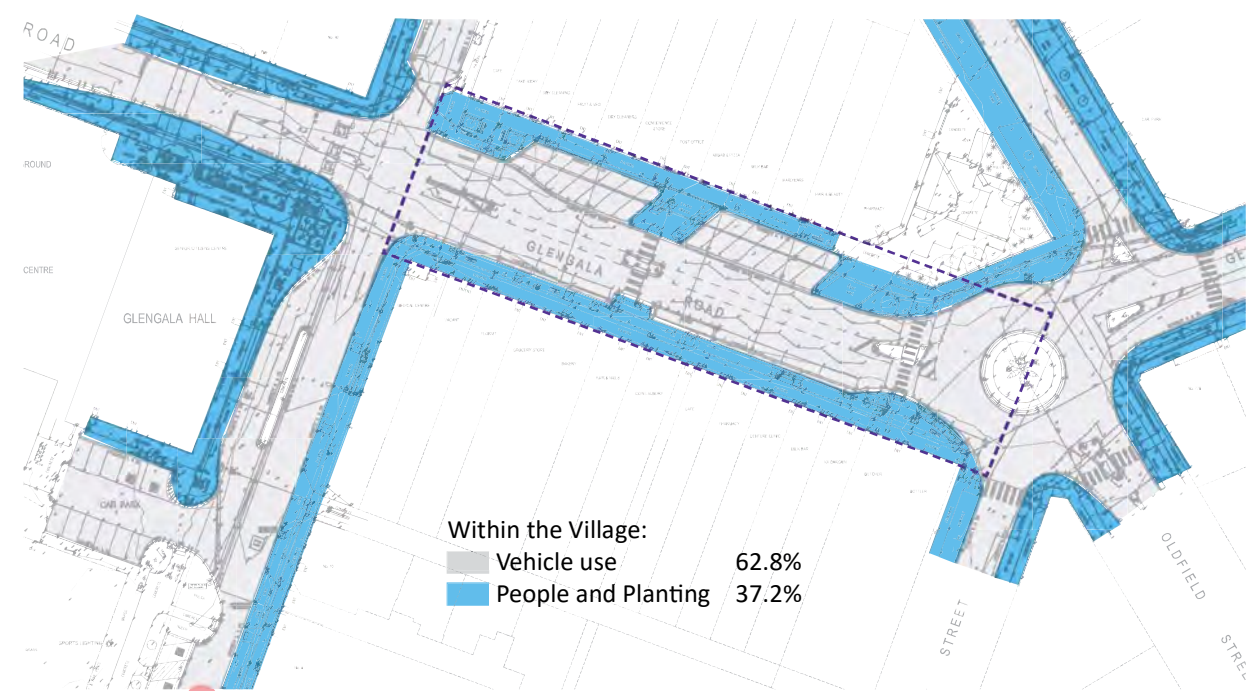
Proposed Option1



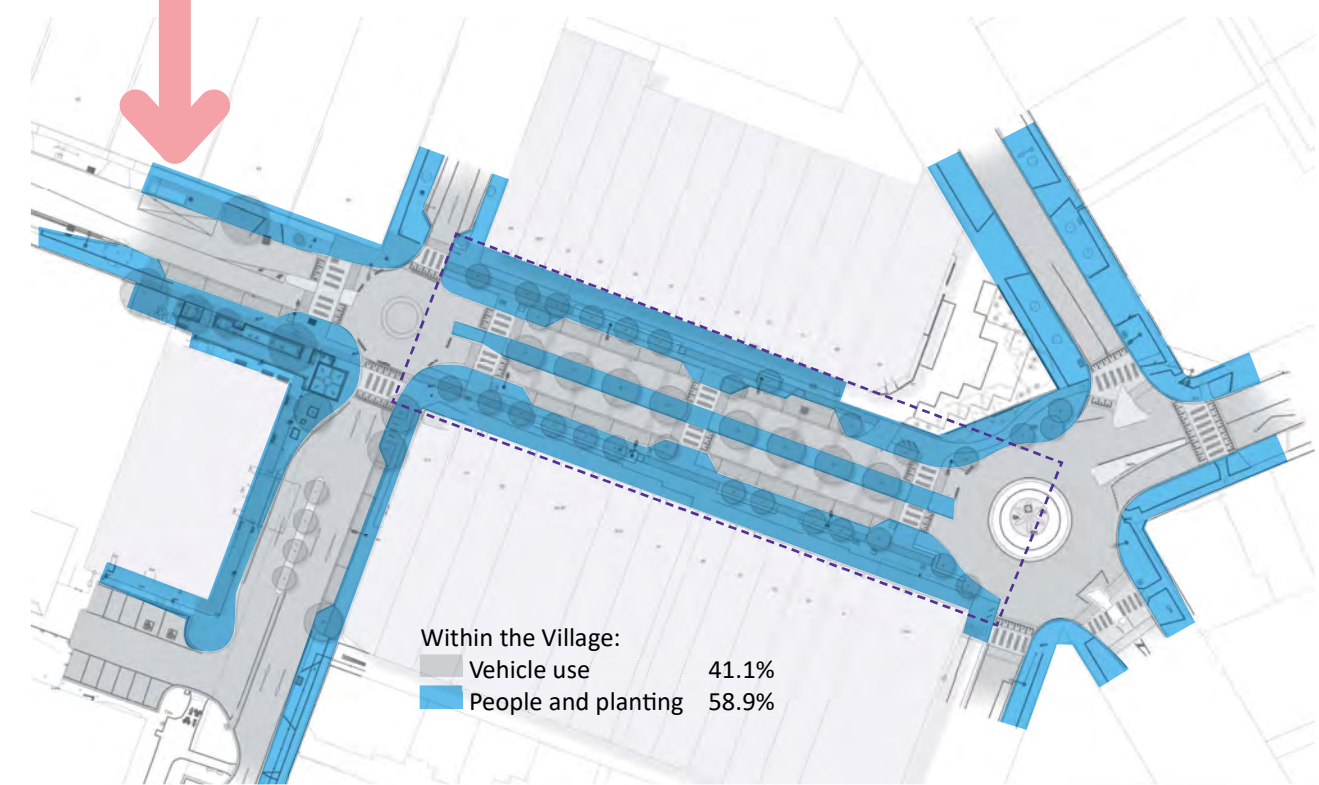
Proposed Option2

Proposed Concept

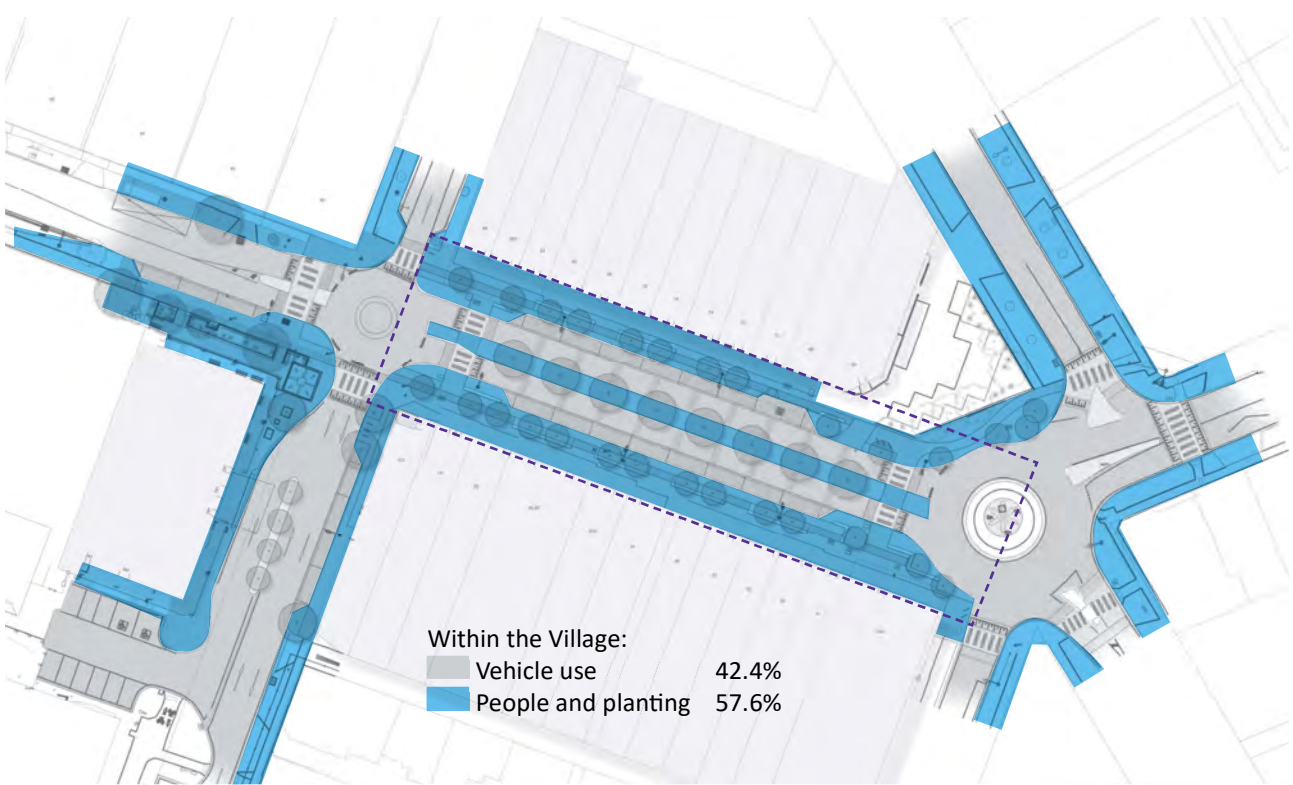
More Space for People and Greenery



Existing



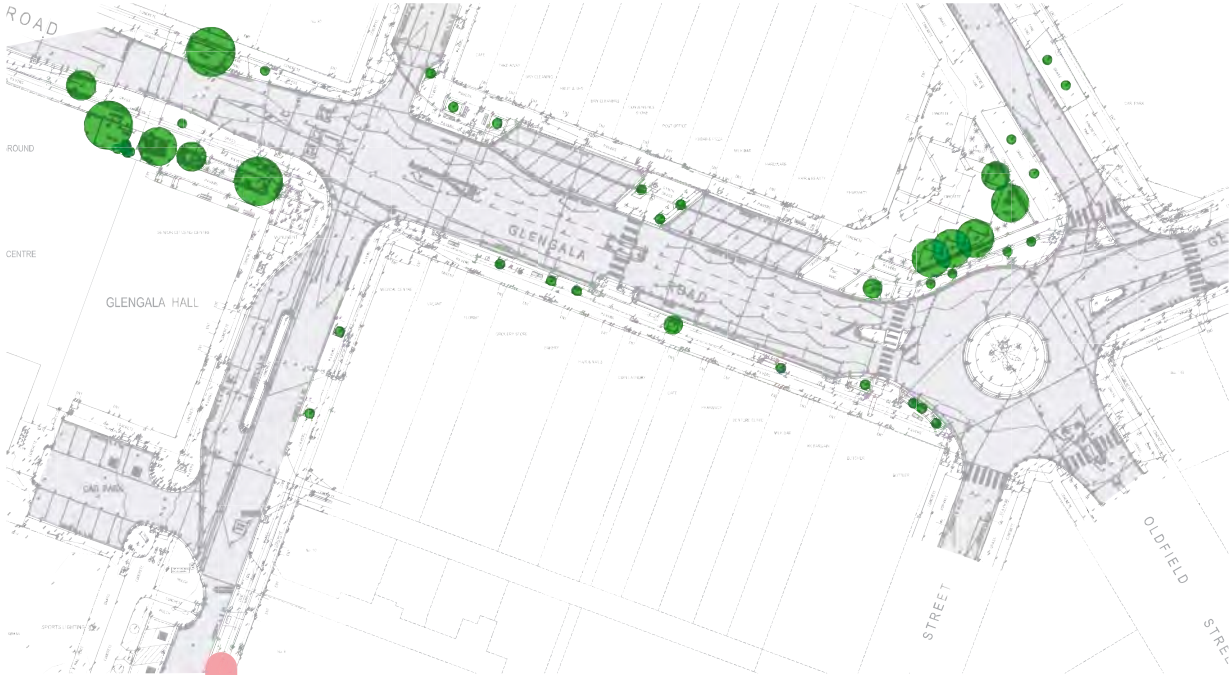
Proposed Option1



Proposed Option2

Proposed Concept

Village in an Urban Forest



Existing



Proposed Option1



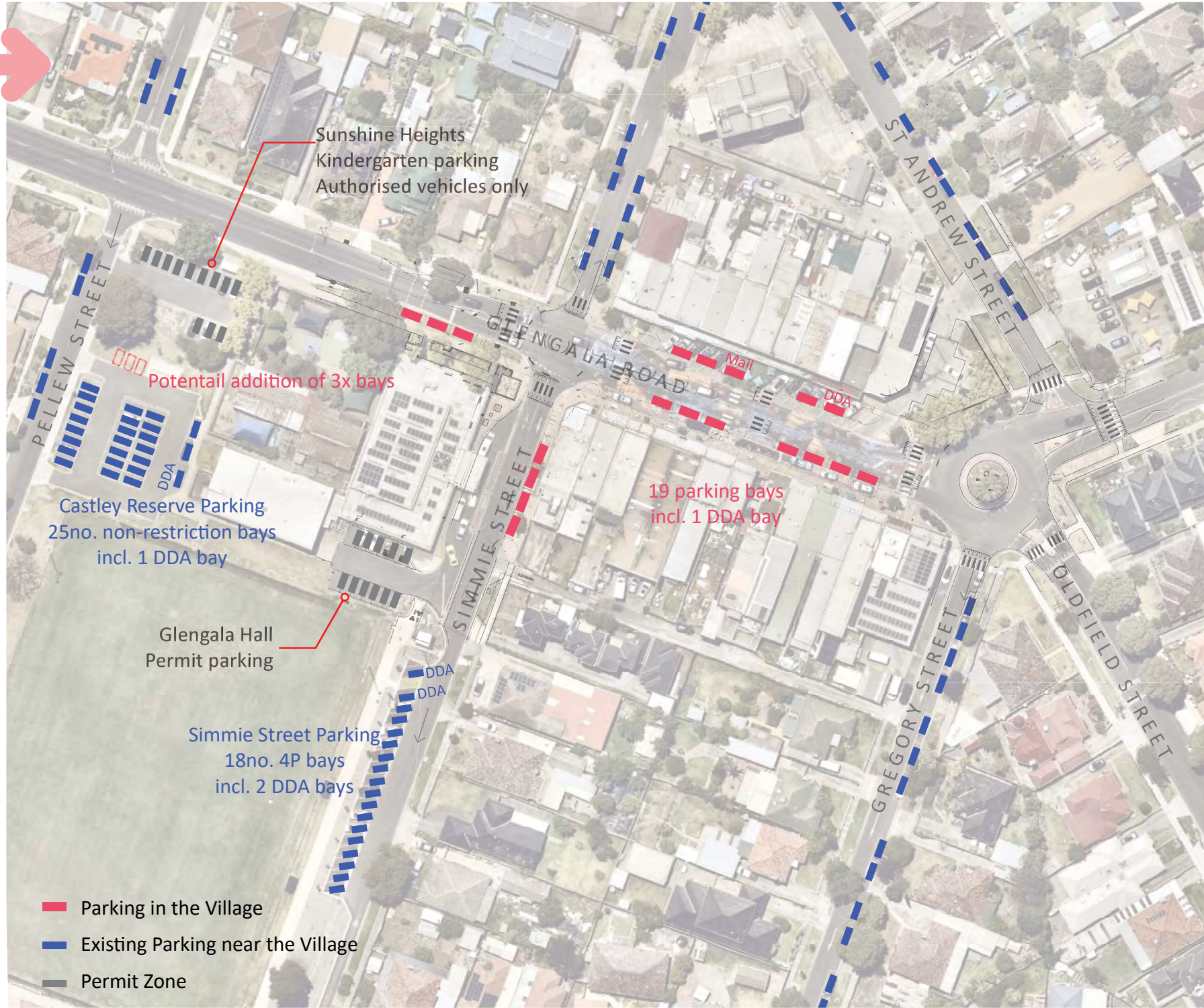
Proposed Option2

Proposed Concept

Public Car Parking

Existing

Proposed Option1



Proposed Concept

Public Car Parking

Existing

Proposed Option2

